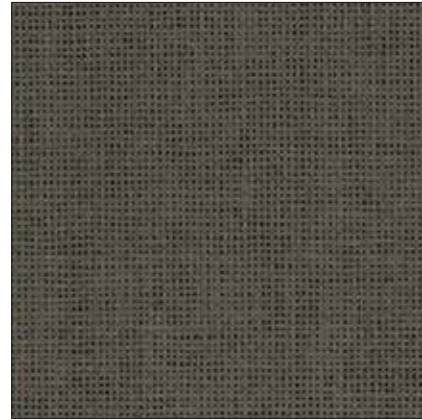


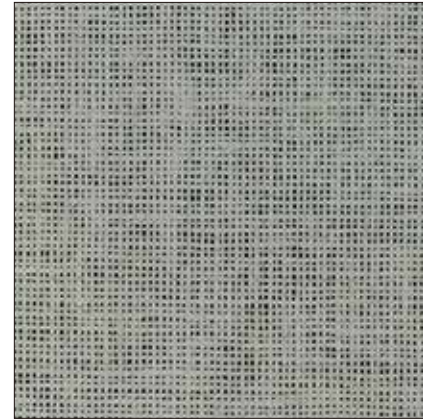
和紙布 品番:UJ430~UJ441



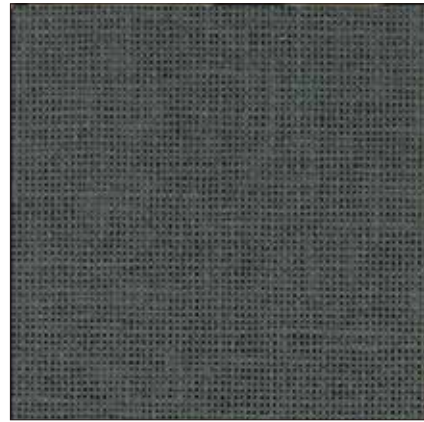
UJ430 綿(わた)



UJ431 栗(くり)



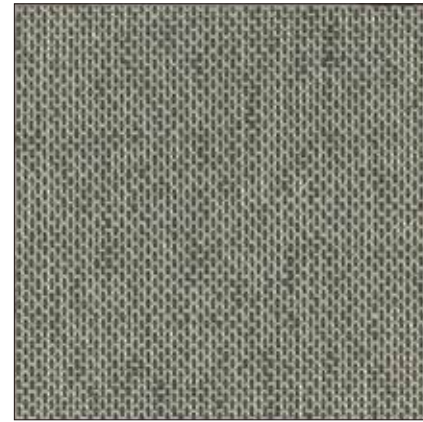
UJ432 銀鼠(ぎんねず)



UJ433 土間(どま)



UJ434 墨(すみ)



UJ435 石畳(いしだたみ)



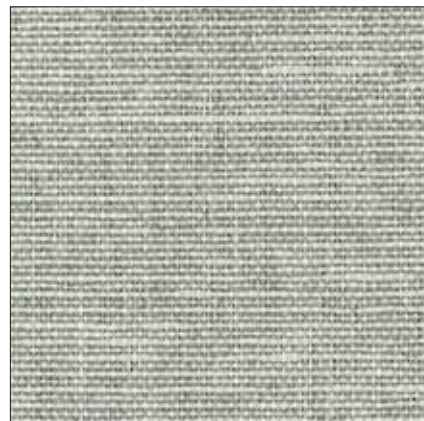
UJ436 錆(さび)



UJ437 鉄黒(てつくろ)



UJ438 真珠(しんじゅ)



UJ439 霧(きり)



UJ440 岩肌(いわはだ)



UJ441 夜風(よかぜ)

和紙布 品番:UJ400~UJ408



UJ400 玉砂利(たまじゃり)



UJ401 青竹(あおたけ)



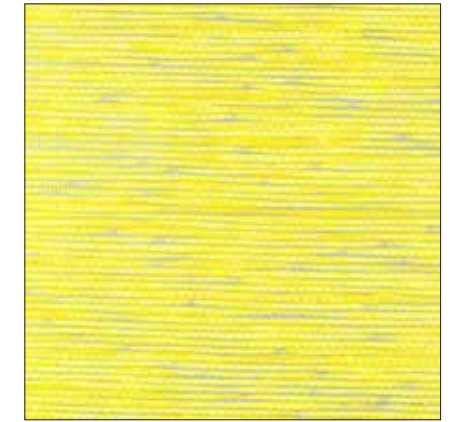
UJ402 桜(さくら)



UJ403 紅梅(こうばい)



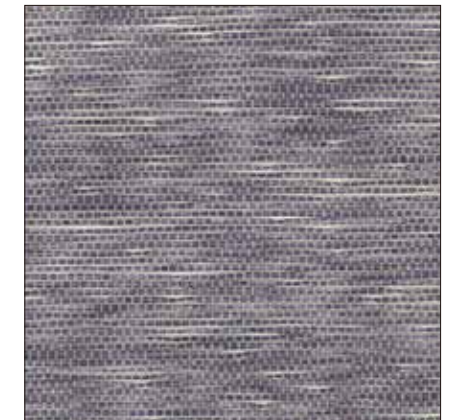
UJ404 海(うみ)



UJ405 檸檬(れもん)



UJ406 朝露(あさつゆ)



UJ407 藤(ふじ)



UJ408 漆(うるし)



和紙布 品番:UJ409~UJ417



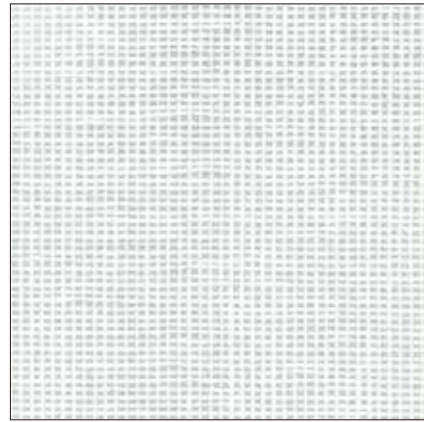
UJ409 宵闇(よいやみ)



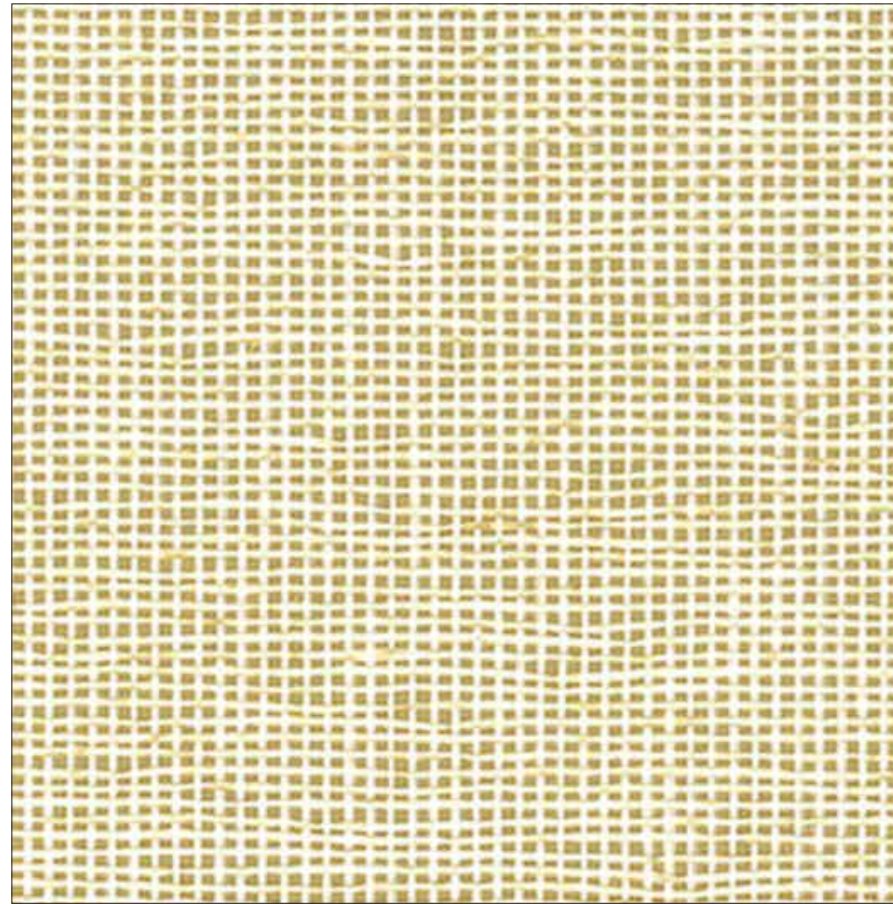
UJ410 紅葉(もみじ)



UJ411 椿(つばき)



UJ412 白鷺(しらさぎ)



UJ413 稲穂(いなほ)



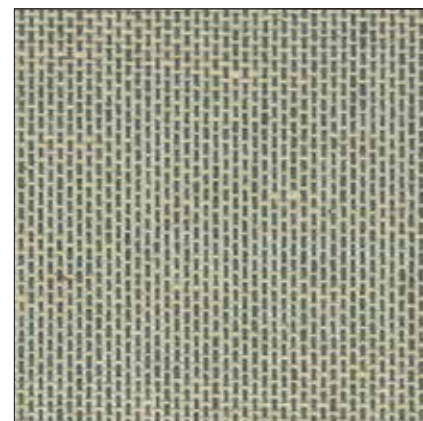
UJ414 初繭(はつまゆ)



UJ415 風花(かざはな)



UJ416 白無垢(しろむく)

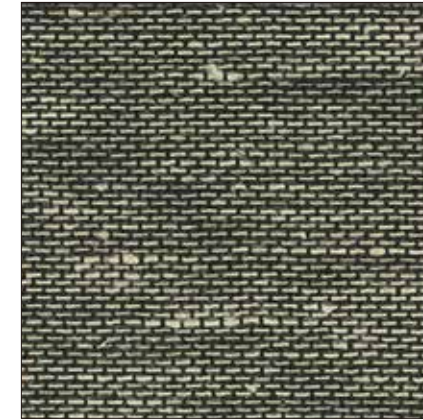


UJ417 風月(ふうげつ)

和紙布 品番:UJ418~UJ429



UJ418 冬枯れ(ふゆかれ)



UJ419 旅(たび)



UJ420 砂紋(さもん)



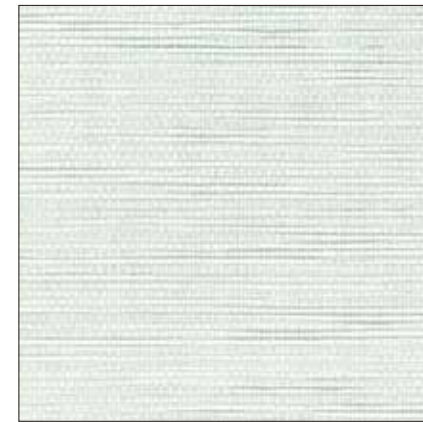
UJ421 石垣(いしがき)



UJ422 瓦(かわら)



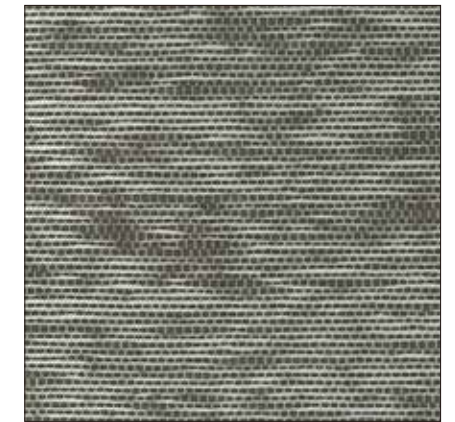
UJ423 黒炭(こくたん)



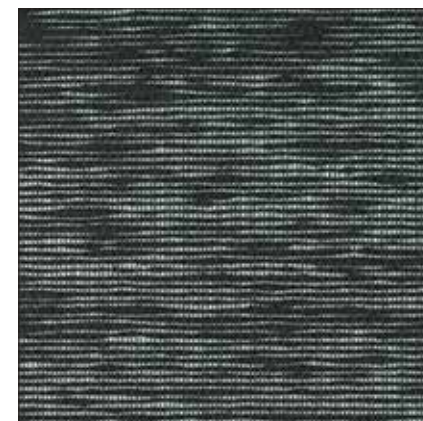
UJ424 銀雪(ぎんせつ)



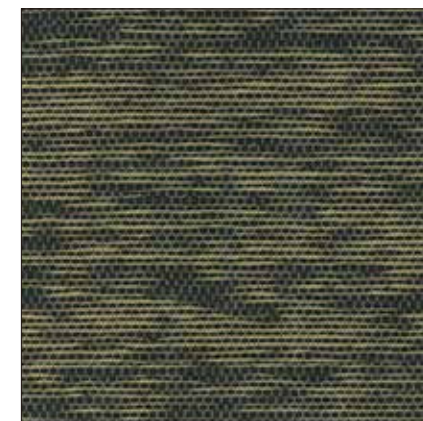
UJ425 暁雲(ぎょううん)



UJ426 水紋(すいもん)



UJ427 銀河(ぎんが)



UJ428 月光(げっこう)



UJ429 卵の花(うのはな)